

Surf50/100

Semiflexible High-Efficiency Solar Modules

Description

The new semi-flexible and ultra-light solar modules of the "Surf" series are ideal for mobile or lightweight applications such as mobile homes, boats or electric vehicles. In opposite to conventional modules, highly efficient and above all break-proof monocrystalline solar cells are used in a glass-fibre reinforced laminate, which still deliver full power even under heavy loads, vibrations, etc.

Due to their structured surface and the surrounding foil edge, the modules can be used for many years in outdoor areas, e.g. as non-slip underlays. With the 4 large eyelets at the corners, the module can be easily tensioned on boats or tents. The foil-based module can also be easily glued or screwed to the rear, drilling through the laminate in the edge area is no problem.

The 3m output cable can be connected directly to 12V lead batteries or 12.8V iron phosphate batteries via a charge controller. With the two MC4 standard connectors, several modules can also be connected in series or parallel to increase the voltage or current.

Technical Data

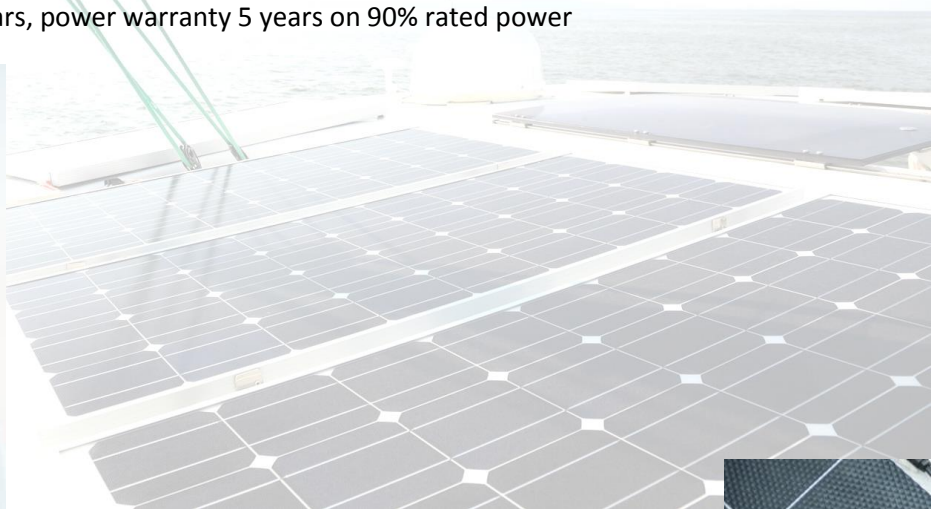
	Dimensions (mm)	Weight (kg)	Rated power* P _{mpp} (Wp)	Rated voltage* U _{mpp} (V)	Charge current (A) real at 12.6V
Surf50	670 x 510 x 3	1,3	50	17,3	2,9
Surf100	1240 x 510 x 3	2,5	100	17,3	5,8

* @ Sunlight 1000W/m² and 25°C module temperature

- Connection:** Cable 3m / 2x 2,5mm² + open ends
- Bending radius:** min. 1m
- Warranty:** 2 years, power warranty 5 years on 90% rated power



Lightweight & flexible



Structured surface

